



ASTRONERGY

ASTRO N5s

Create Sustainable and Efficient Green Energy

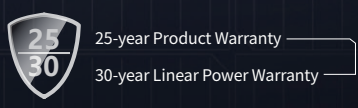
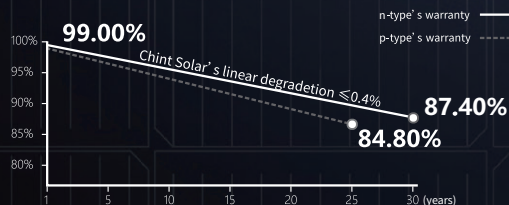
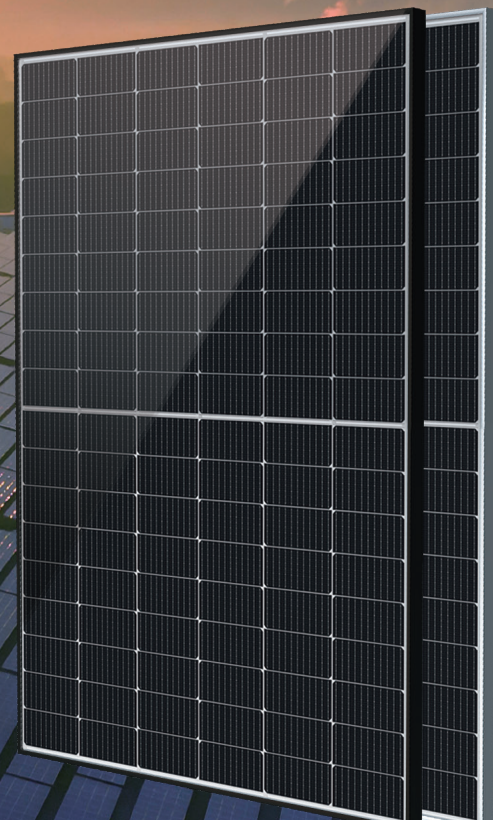
CHSM54N-HC Monofacial Series (182)

415~430W

TOPCon / Multi-busbar / Half-cut

Non-destructive cutting

Lower BOS cost & LCOE



ISO 9001:2015:ISO Quality Management System
 ISO 14001:2015:ISO Environment Management System
 ISO 45001:Occupational Health and Safety
 The first solar company which passed the Nord IEC/TS 62941 certification audit.



Tier 1
BloombergNEF



415~430W

POWER RANGE

0~+5W

POWER TOLERANCE

22.0%

MAX MODULE EFFICIENCY

≤ 1.0%

FIRST YEAR POWER DEGRADATION

≤ 0.4%

YEAR 2-30 POWER DEGRADATION

Electrical Specifications

STC: Irradiance 1000W/m², Cell Temperature 25° C, AM=1.5

Rated output (Pmpp / Wp)	415	420	425	430
Rated voltage (Vmpp / V)	31.76	31.93	32.10	32.27
Rated current (Impp / A)	13.06	13.15	13.24	13.33
Open circuit voltage (Voc / V)	37.80	38.00	38.20	38.40
Short circuit current (Isc / A)	13.76	13.87	13.98	14.09
Module efficiency	21.3%	21.5%	21.8%	22.0%

NMOT: Irradiance 800W/m², Ambient Temperature 20° C, AM=1.5, Wind Speed 1m/s

Rated output (Pmpp / Wp)	312.1	315.8	319.6	323.4
Rated voltage (Vmpp / V)	29.90	30.06	30.21	30.37
Rated current (Impp / A)	10.44	10.51	10.58	10.65
Open circuit voltage (Voc / V)	35.91	36.10	36.29	36.48
Short circuit current (Isc / A)	11.11	11.20	11.28	11.37

Power Sorting: 0~+5W

Measurement tolerance +/- 3%

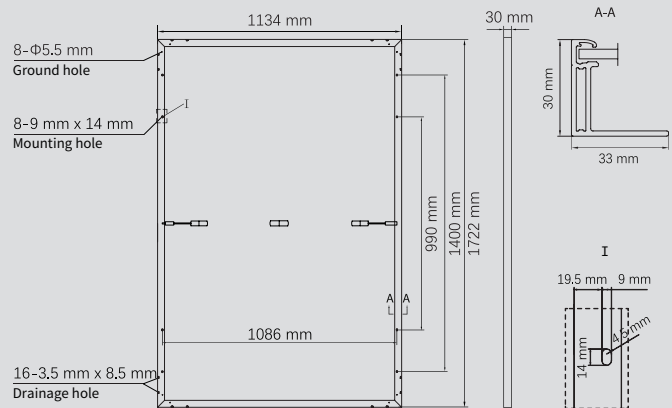
Temperature Ratings (STC)

Temperature coefficient (Pmpp)	-0.30%/°C	No. of diodes	3
Temperature coefficient (Isc)	+0.043%/°C	Junction box IP rating	IP 68
Temperature coefficient (Voc)	-0.24%/°C	Max. series fuse rating	25 A
Nominal module operating temperature (NMOT)	41±2°C	Max. system voltage (IEC/UL)	1500V _{DC}

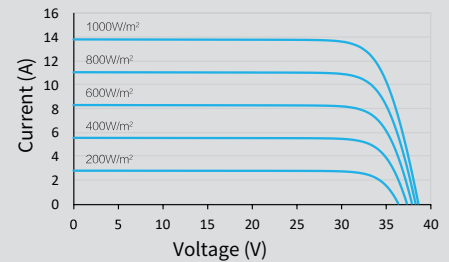
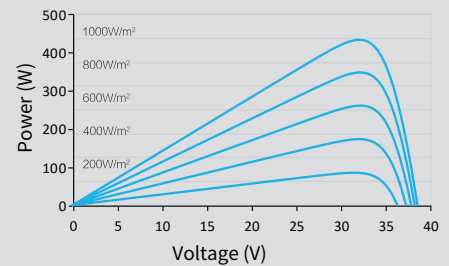
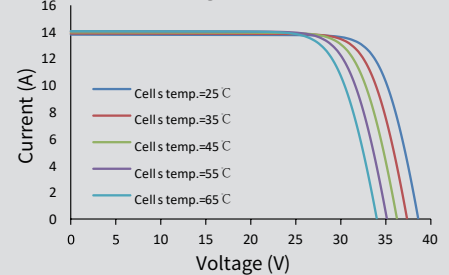
Operating Parameters

Mechanical Specifications

Outer dimensions (L x W x H)	1722 x 1134 x 30 mm
Cell Type	n-type Mono-crystalline
No. of cells	108 (6*18)
Frame technology	Aluminum, black or silver anodized
Front glass thickness	3.2 mm
Cable length (IEC/UL)	Portrait: 300 mm; Landscape: 1200 mm
Cable diameter (IEC/UL)	4 mm ² / 12 AWG
① Maximum mechanical test load	5400 Pa (front) / 2400 Pa (back)
Connector type (IEC/UL)	HCB40 or PV-KST4-EVO2/XY-UR, PVKBT4-EVO2/XY-UR(optional)
Module weight	21.6 kg
Packing unit	36 pcs / box (Subject to sales contract)
Weight of packing unit (for 40' HQ container)	821 kg
Modules per 40' HQ container	936 pcs



Curve

Current-Voltage (425W)**Power-Voltage (425W)****Current-Voltage (425W)**

① Refer to Astronergy crystalline installation manual or contact technical department.
Maximum Mechanical Test Load=1.5×Maximum Mechanical Design Load.

